



Remote power controller is based on ZETA and remote switch technology. Detect current value, and send the value to server. Remote control power on and off. Detect temperature and humidity through Integrated sensor. Respond accurately through RFID technology.

Features

High sensitivity @ 132dBm@300bps
Backup battery supply when main power down
Periodic self-check

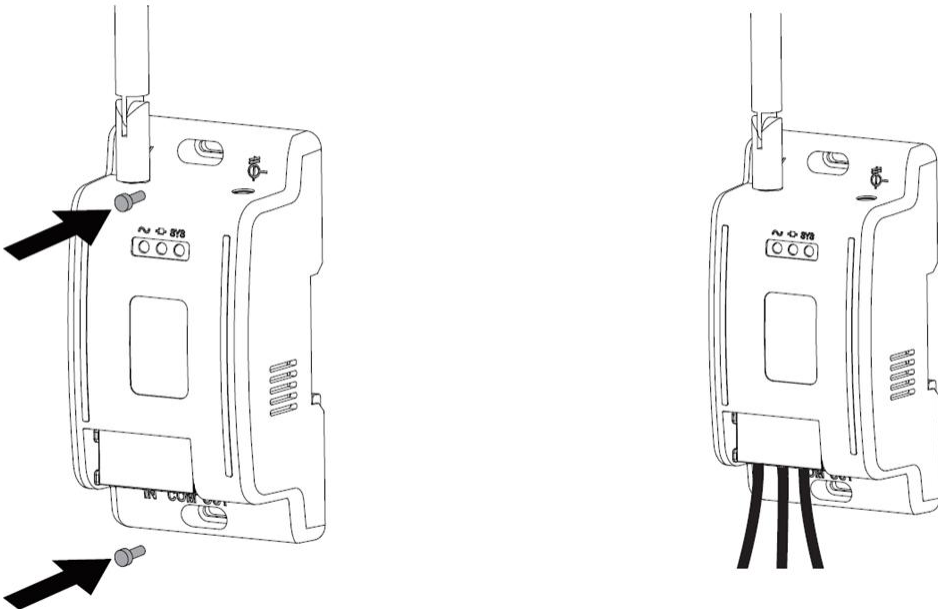
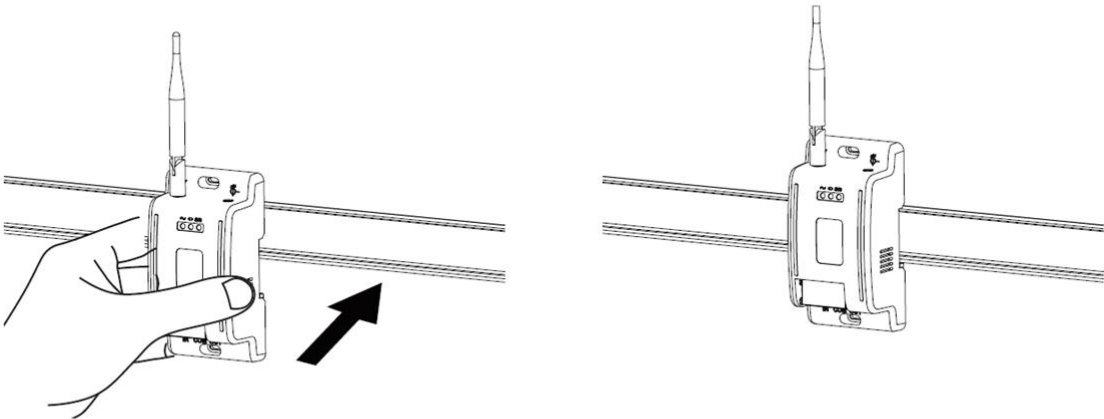
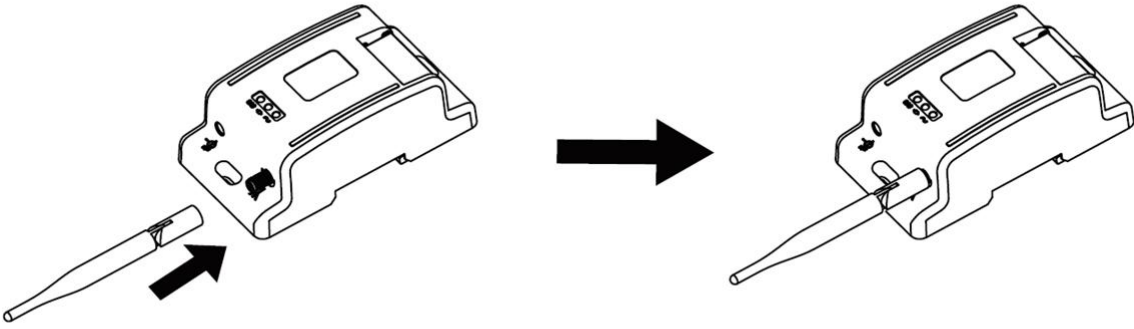
Target applications

Power on/off detecting
Power on/off controlling
Temperature/Humidity detecting

Datasheet

Type	Parameter	Remark
Power supply	220~250VAC	AC
Connecting	Inner thread	For connecting input/output power
Device power	MAX@6W	Internal power
Tx power	15dBm	Transmit power
IoT protocol	ZETA	-
Current transformer	220VAC , 0.1~9.9A	
Transformer interface	I.D 3.5mm, Audio port	-
Current sampling	1Hz	Sampling once per second
Optional sensor	Temperature: 25°C@±3%	Device will heat nearby temperature
	Humidity: 25°C@±5%	
Backup power	3.7V@100mAh	Re-chargeable
Working temp	-10~50°C	-
Working humidity	<90%	-
antistatic	Touch ±6kV	-
Water proof	None	-
Fire proof	UL94v0	-

Installation



Notice

1. Obey the Specification for Electrical operation
2. Keep the wiring connected firmly and reliably.
3. Antenna installation might be different depends on real work site



Shanghai China

Room 901, HongCao
Building 67

+86 (0) 21-61320820

info@zifisense.com

www.zifisense.com

Xiamen China

Software Park Phase 3,
A2-1303

+86 (0) 592 6070310

info@zifisense.com

www.zifisense.com

Cambridge UK

3 Charles Babbage
Road,

+44(0) 1223 491 099

info@zifisense.com

www.zifisense.co.uk